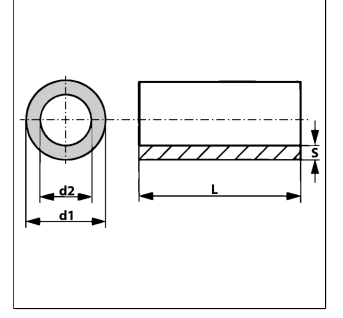


Özellikler

| | |
|-----------------------|--|
| Customs tariff number | 73043120 |
| Boru uzunluğu | 6 metre |
| Malzeme | Steel E235+N (1.0308) |
| Standart | DIN EN 10305-4 |
| Model | precision steel tube, seamless, (cold-drawn), metric |
| Yüzey koruması | fosfatlı ve yağlı |



Uyarı

Verilen Basınç Değerleri, Düz Borular İçin Geçerlidir.

Boru Bükümlü Olduğunda Uygun Boru Et Kalınlıklarının, DIN EN 13480-4'e Analog bir Şekilde Hesaplanması Gerekir.

Ek bilgiler

Analog hesaplama DIN 2413

Yüklenme durumu I: Statik (maksimum 120 °C)

Yüklenme durumu III: Dinamik (maksimum 120 °C)

salınma genişliği = P bar

Mukavemet tanım değeri: K 235 [N/mm²]

Güvenlik ek değeri: S 1,5

Sürekli kabarma sağlamlığı :σSch/D 225 [N/mm²]

Toleranslar: DIN 10305-4

Ürün

| Adı | Ø d1 (mm) | S (mm) | Yüklenme durumu I (bar) | Yüklenme durumu III (bar) | Ø d2 (mm) | AD toleransı +/- (mm) | ID toleransı +/- (mm) |
|------------|--------------|-----------|----------------------------|------------------------------|--------------|--------------------------|--------------------------|
| PR 04-0.5 | 4 | 0.5 | 210 | 189 | 3 | 0.08 | 0.15 |
| PR 04-0.75 | 4 | 0.75 | 405 | 345 | 2.5 | 0.08 | 0.15 |
| PR 04-1 | 4 | 1 | 602 | 484 | 2 | 0.08 | 0.15 |
| PR 05-0.75 | 5 | 0.75 | 325 | 282 | 3.5 | 0.08 | 0.15 |
| PR 05-1 | 5 | 1 | 482 | 400 | 3 | 0.08 | 0.15 |
| PR 06-0.75 | 6 | 0.75 | 286 | 251 | 4.5 | 0.08 | 0.12 |
| PR 06-1 | 6 | 1 | 416 | 352 | 4 | 0.08 | 0.12 |
| PR 06-1.5 | 6 | 1.5 | 663 | 524 | 3 | 0.08 | 0.15 |
| PR 06-2 | 6 | 2 | 924 | 683 | 2 | 0.08 | 0.15 |
| PR 06-2.25 | 6 | 2.25 | 1053 | 755 | 1.5 | 0.08 | 0.15 |
| PR 08-1 | 8 | 1 | 320 | 278 | 6 | 0.08 | 0.1 |
| PR 08-1.5 | 8 | 1.5 | 516 | 424 | 5 | 0.08 | 0.1 |
| PR 08-2 | 8 | 2 | 693 | 543 | 4 | 0.08 | 0.15 |
| PR 08-2.5 | 8 | 2.5 | 888 | 663 | 3 | 0.08 | 0.15 |
| PR 10-1 | 10 | 1 | 263 | 232 | 8 | 0.08 | 0.08 |
| PR 10-1.5 | 10 | 1.5 | 407 | 345 | 7 | 0.08 | 0.12 |
| PR 10-2 | 10 | 2 | 554 | 451 | 6 | 0.08 | 0.15 |
| PR 10-2.5 | 10 | 2.5 | 711 | 555 | 5 | 0.08 | 0.15 |
| PR 10-3 | 10 | 3 | 867 | 650 | 4 | 0.08 | 0.15 |
| PR 10-4 | 10 | 4 | 1178 | 820 | 2 | 0.08 | 0.15 |
| PR 12-1 | 12 | 1 | 219 | 196 | 10 | 0.08 | 0.08 |
| PR 12-1.5 | 12 | 1.5 | 344 | 297 | 9 | 0.08 | 0.1 |

| Adı | Ø d1 | S | Yüklenme durumu I | Yüklenme durumu III | Ø d2 | AD toleransı +/- | ID toleransı +/- |
|-----------|------|-----|-------------------|---------------------|------|------------------|------------------|
| PR 12-2 | 12 | 2 | 469 | 391 | 8 | 0.08 | 0.12 |
| PR 12-2.5 | 12 | 2.5 | 592 | 477 | 7 | 0.08 | 0.15 |
| PR 12-3 | 12 | 3 | 723 | 562 | 6 | 0.08 | 0.15 |
| PR 12-4 | 12 | 4 | 984 | 717 | 4 | 0.08 | 0.15 |
| PR 14-1 | 14 | 1 | 187 | 169 | 12 | 0.08 | 0.08 |
| PR 14-1.5 | 14 | 1.5 | 299 | 262 | 11 | 0.08 | 0.08 |
| PR 14-2 | 14 | 2 | 407 | 345 | 10 | 0.08 | 0.1 |
| PR 14-2.5 | 14 | 2.5 | 514 | 423 | 9 | 0.08 | 0.12 |
| PR 14-3 | 14 | 3 | 619 | 495 | 8 | 0.08 | 0.15 |
| PR 14-3.5 | 14 | 3.5 | 731 | 568 | 7 | 0.08 | 0.15 |
| PR 15-1 | 15 | 1 | 175 | 159 | 13 | 0.08 | 0.08 |
| PR 15-1.5 | 15 | 1.5 | 279 | 246 | 12 | 0.08 | 0.08 |
| PR 15-2 | 15 | 2 | 380 | 324 | 11 | 0.08 | 0.1 |
| PR 15-2.5 | 15 | 2.5 | 480 | 398 | 10 | 0.08 | 0.12 |
| PR 15-3 | 15 | 3 | 578 | 467 | 9 | 0.08 | 0.15 |
| PR 16-1 | 16 | 1 | 164 | 149 | 14 | 0.08 | 0.08 |
| PR 16-1.5 | 16 | 1.5 | 262 | 231 | 13 | 0.08 | 0.08 |
| PR 16-2 | 16 | 2 | 346 | 298 | 12 | 0.08 | 0.15 |
| PR 16-2.5 | 16 | 2.5 | 450 | 377 | 11 | 0.08 | 0.12 |
| PR 16-3 | 16 | 3 | 542 | 442 | 10 | 0.08 | 0.15 |
| PR 16-4 | 16 | 4 | 738 | 572 | 8 | 0.08 | 0.15 |
| PR 18-1 | 18 | 1 | 146 | 133 | 16 | 0.08 | 0.08 |
| PR 18-1.5 | 18 | 1.5 | 233 | 207 | 15 | 0.08 | 0.08 |
| PR 18-2 | 18 | 2 | 320 | 278 | 14 | 0.08 | 0.08 |
| PR 18-2.5 | 18 | 2.5 | 395 | 335 | 13 | 0.08 | 0.15 |
| PR 18-3 | 18 | 3 | 482 | 400 | 12 | 0.08 | 0.15 |
| PR 18-4 | 18 | 4 | 656 | 519 | 10 | 0.08 | 0.15 |
| PR 20-1.5 | 20 | 1.5 | 209 | 188 | 17 | 0.08 | 0.08 |
| PR 20-2 | 20 | 2 | 288 | 252 | 16 | 0.08 | 0.08 |
| PR 20-2.5 | 20 | 2.5 | 355 | 305 | 15 | 0.08 | 0.15 |
| PR 20-3 | 20 | 3 | 433 | 364 | 14 | 0.08 | 0.15 |
| PR 20-3.5 | 20 | 3.5 | 512 | 421 | 13 | 0.08 | 0.15 |
| PR 20-4 | 20 | 4 | 590 | 475 | 12 | 0.08 | 0.15 |
| PR 22-1 | 22 | 1 | 119 | 109 | 20 | 0.08 | 0.08 |
| PR 22-1.5 | 22 | 1.5 | 190 | 172 | 19 | 0.08 | 0.08 |
| PR 22-2 | 22 | 2 | 262 | 231 | 18 | 0.08 | 0.08 |
| PR 22-2.5 | 22 | 2.5 | 333 | 288 | 17 | 0.08 | 0.08 |
| PR 22-3 | 22 | 3 | 394 | 335 | 16 | 0.08 | 0.15 |
| PR 25-1 | 25 | 1 | 105 | 97 | 23 | 0.08 | 0.08 |
| PR 25-1.5 | 25 | 1.5 | 167 | 152 | 22 | 0.08 | 0.08 |
| PR 25-2 | 25 | 2 | 230 | 205 | 21 | 0.08 | 0.08 |
| PR 25-2.5 | 25 | 2.5 | 293 | 256 | 20 | 0.08 | 0.08 |
| PR 25-3 | 25 | 3 | 347 | 299 | 19 | 0.08 | 0.15 |
| PR 25-3.5 | 25 | 3.5 | 409 | 347 | 18 | 0.08 | 0.15 |
| PR 25-4 | 25 | 4 | 472 | 393 | 17 | 0.08 | 0.15 |
| PR 25-4.5 | 25 | 4.5 | 535 | 437 | 16 | 0.08 | 0.15 |
| PR 25-5 | 25 | 5 | 597 | 480 | 15 | 0.08 | 0.15 |
| PR 28-1 | 28 | 1 | 93 | 87 | 26 | 0.08 | 0.08 |

| Adı | Ø d1 | S | Yüklenme durumu I | Yüklenme durumu III | Ø d2 | AD toleransı +/- | ID toleransı +/- |
|-----------|------|-----|-------------------|---------------------|------|------------------|------------------|
| PR 28-1.5 | 28 | 1.5 | 149 | 136 | 25 | 0.08 | 0.08 |
| PR 28-2 | 28 | 2 | 205 | 184 | 24 | 0.08 | 0.08 |
| PR 28-2.5 | 28 | 2.5 | 261 | 231 | 23 | 0.08 | 0.08 |
| PR 28-3 | 28 | 3 | 309 | 270 | 22 | 0.08 | 0.15 |
| PR 28-3.5 | 28 | 3.5 | 365 | 313 | 21 | 0.08 | 0.15 |
| PR 28-4 | 28 | 4 | 421 | 355 | 20 | 0.08 | 0.15 |
| PR 28-4.5 | 28 | 4.5 | 477 | 396 | 19 | 0.08 | 0.15 |
| PR 28-5 | 28 | 5 | 533 | 436 | 18 | 0.08 | 0.15 |
| PR 30-1.5 | 30 | 1.5 | 139 | 128 | 27 | 0.08 | 0.08 |
| PR 30-2 | 30 | 2 | 192 | 173 | 26 | 0.08 | 0.08 |
| PR 30-2.5 | 30 | 2.5 | 244 | 217 | 25 | 0.08 | 0.08 |
| PR 30-3 | 30 | 3 | 289 | 253 | 24 | 0.08 | 0.15 |
| PR 30-4 | 30 | 4 | 393 | 334 | 22 | 0.08 | 0.15 |
| PR 30-5 | 30 | 5 | 498 | 411 | 20 | 0.08 | 0.15 |
| PR 30-6 | 30 | 6 | 595 | 478 | 18 | 0.15 | 0.15 |
| PR 32-1.5 | 32 | 1.5 | 131 | 120 | 29 | 0.08 | 0.08 |
| PR 35-2 | 35 | 2 | 152 | 138 | 31 | 0.15 | 0.15 |
| PR 35-2.5 | 35 | 2.5 | 196 | 177 | 30 | 0.15 | 0.15 |
| PR 35-3 | 35 | 3 | 241 | 214 | 29 | 0.15 | 0.15 |
| PR 35-4 | 35 | 4 | 331 | 286 | 27 | 0.15 | 0.15 |
| PR 35-5 | 35 | 5 | 420 | 355 | 25 | 0.15 | 0.15 |
| PR 35-6 | 35 | 6 | 510 | 420 | 23 | 0.15 | 0.15 |
| PR 38-2.5 | 38 | 2.5 | 181 | 163 | 33 | 0.15 | 0.15 |
| PR 38-3 | 38 | 3 | 222 | 198 | 32 | 0.15 | 0.15 |
| PR 38-4 | 38 | 4 | 305 | 266 | 30 | 0.15 | 0.15 |
| PR 38-5 | 38 | 5 | 387 | 330 | 28 | 0.15 | 0.15 |
| PR 38-6 | 38 | 6 | 469 | 391 | 26 | 0.15 | 0.15 |
| PR 38-7 | 38 | 7 | 552 | 449 | 24 | 0.15 | 0.15 |
| PR 42-2 | 42 | 2 | 119 | 109 | 38 | 0.2 | 0.2 |
| PR 42-3 | 42 | 3 | 193 | 174 | 36 | 0.2 | 0.2 |
| PR 42-4 | 42 | 4 | 268 | 236 | 34 | 0.2 | 0.2 |
| PR 42-5 | 42 | 5 | 343 | 296 | 32 | 0.2 | 0.2 |
| PR 45-5 | 45 | 5 | 320 | 278 | 35 | 0.2 | 0.2 |
| PR 50-4 | 50 | 4 | 225 | 201 | 42 | 0.2 | 0.2 |
| PR 50-5 | 50 | 5 | 288 | 252 | 40 | 0.2 | 0.2 |
| PR 50-6 | 50 | 6 | 350 | 302 | 38 | 0.2 | 0.2 |
| PR 60-3 | 60 | 3 | 130 | 119 | 54 | 0.25 | 0.25 |
| PR 60-4 | 60 | 4 | 182 | 165 | 52 | 0.25 | 0.25 |
| PR 60-10 | 60 | 10 | 496 | 410 | 40 | 0.25 | 0.25 |
| PR 65-8 | 65 | 8 | 356 | 306 | 49 | 0.3 | 0.3 |
| PR 80-10 | 80 | 10 | 364 | 312 | 60 | 0.35 | 0.35 |